

LED LIGHT BAND ZEN XS

FORM

- ORDER OFFER

PROPERTY

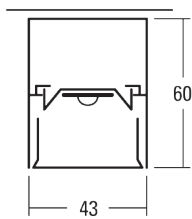
NAME
ADDRESS

☎
 ✉

DATE

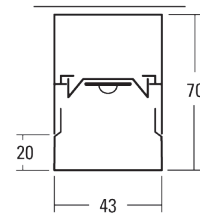
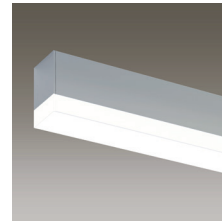
PROFILE / COVER / END PLATES

- Profile H 60 mm, flush-mounted cover, direct light emission



- Satin-finished cover
 Prismatic cover
- Aluminium end plates

- Profile H 70 mm, surface-mounted cover, direct and lateral light emission



- Satin-finished cover
- Aluminium end plates
 Aluminium/satin-finished end plates

MOUNTING

- Surface (ceiling/wall) Cable suspension 1 m
 Cable suspension 2 m
 Cable suspension 3 m

LIGHT COLOUR

- 3000 K
 4000 K

CUTTING

(Profile is supplied in the next larger standard length if cut to size on site)

- Cutting of profile On site Tulux¹
Cutting of cover On site Tulux¹

CONVERTER

- ON/OFF
 DALI 2 / Touch Dim

Maximum profile length that can be handled on site: _____ mm.

Pos.	Length ² in mm	Quantity	EME ³	Remarks
			<input type="checkbox"/>	
			<input type="checkbox"/>	
			<input type="checkbox"/>	
			<input type="checkbox"/>	
			<input type="checkbox"/>	
			<input type="checkbox"/>	
			<input type="checkbox"/>	

¹ Plus cutting fee / ² Specify length including end plates, minimum length 573 mm / ³ EMERGENCY element, with single battery supply 1 h, possible from a minimum length of 1135 mm.