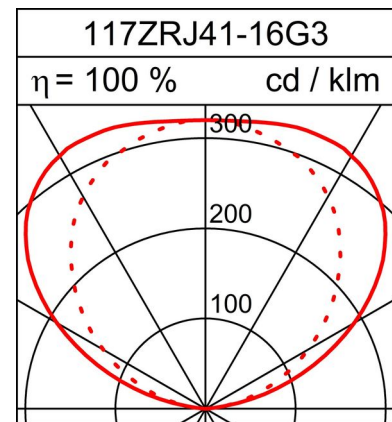
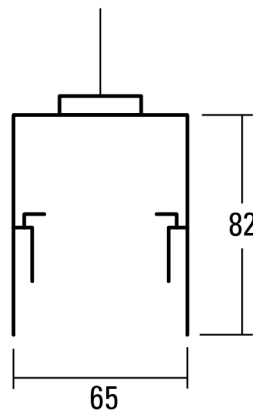
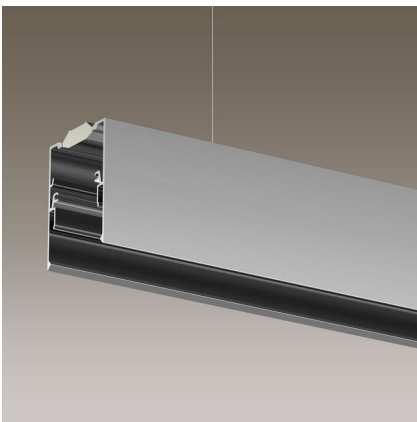


# INDIRECT PENDULUM RAIL ZEN

## Technical data sheet

16W LED, 1747 Lumen, 110 Lumen/Watt, 3000 Kelvin. L=1170mm, CRI>80, UGR<10, IP20. Natural anodized aluminium profile. With indirect light and cover. With electronic ballast.



### PRODUCT DATA

Item number	117ZRJ41-16G3
Dimensions	L=1170 mm
Light source	LED
Equipping / Current feed	16 W
System output	16 W

### LIGHT DATA

Optical light output ratio	100 %
Light direct/non direct ratio	0 / 100 %
Absolute luminous flux (Basis: Light source 840)	1747 lm
Luminaire light output (lm/W)	110 lm/W

### UNIFIED GLARE RATING UGR

X=4H, Y=8H, S=0,25H	
Deg. of reflection 70/50/20	
Perpendicular Zero	<10
Perpendicular Ninty	<10

Subject to technical modifications. 24.09.2022