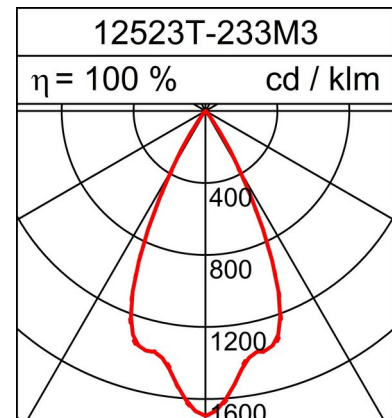
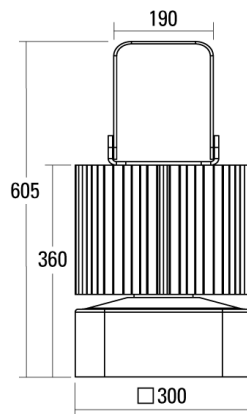
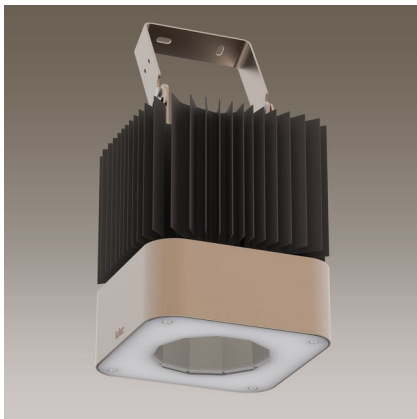


PROJECTOR BEAM

Technical data sheet

245.6W LED, 31939 Lumen, 131 Lumen/Watt, 3000 Kelvin. H=605mm, h=360mm, Q=300x300mm, CRI>80, UGR<16, IP65. Luminaire made of aluminium. Mire grey coloured heat sink. Highly reflective, low-gloss reflector made of superpure aluminium. Housing in metallic chamois. Pivoting bracket. Rotationally symmetric light distribution. Narrow-angled beam. Suitable for ambient temperatures of -25°C up to +45°C. Higher temperature resistances on request. With clear security glass and sealing. With electronic ballast.



PRODUCT DATA

Item number	12523T-233M3
Dimensions	H=605 mm / h=360 mm / LxB=300x300 mm
Light source	LED
Equipping / Current feed	233.3 W
System output	245.6 W
Assembly distance	100 mm
Weight	18 kg

LIGHT DATA

Optical light output ratio	100 %
Light direct/non direct ratio	100 / 0 %
Absolute luminous flux (Basis: Light source 840)	31939 lm
Luminaire light output (lm/W)	131 lm/W

UNIFIED GLARE RATING UGR

X=4H, Y=8H, S=0,25H	
Deg. of reflection 70/50/20	
Perpendicular Zero	15.5
Perpendicular Ninty	15.5

Subject to technical modifications. 26.02.2024