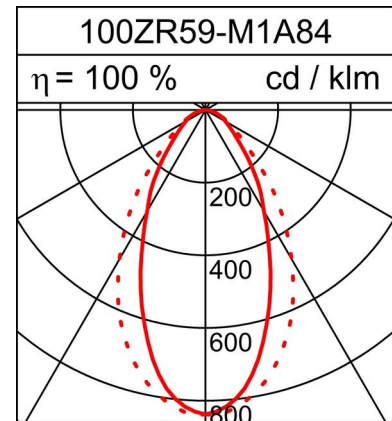
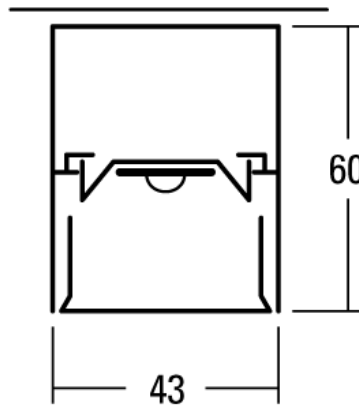
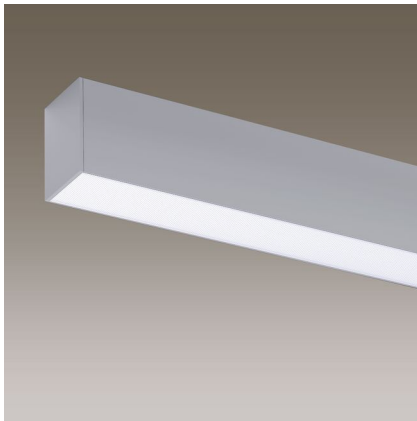


LED LIGHT BAND ZEN XS

Technical data sheet

14.8W LED, 1520 Lumen, 103 Lumen/Watt, 4000 Kelvin. L=1000mm, W=43mm, H=60mm, IP20, CRI>80. For ceiling or pendant mounting. Natural anodized aluminium profile. White lacquered insert. Flush-mounted cover made of prismatic acrylic glass. Direct emission. With electronic ballast. With DALI control. End plates excluded.



PRODUCT DATA

Item number	100ZR59-M1AD84
Dimensions	L=1000 mm / B=43 mm / H=60 mm
Light source	LED
Equipping / Current feed	12.3 W
System output	14.8 W

LIGHT DATA

Optical light output ratio	100 %
Light direct/non direct ratio	100 / 0 %
Absolute luminous flux (Basis: Light source 840)	1520 lm
Luminaire light output (lm/W)	103 lm/W

UNIFIED GLARE RATING UGR

X=4H, Y=8H, S=0,25H	
Deg. of reflection 70/50/20	
Perpendicular Zero	19.8
Perpendicular Ninty	20.5

Subject to technical modifications. 14.10.2021